

The Items Listed In The Green Circles Below

ARE ACCEPTABLE

In Your Curbside Recycling Bin!



PLASTIC CONTAINERS
(with necks only)



CARTONS & JUICE BOXES



EMPTY AEROSOL CANS



ALUMINUM CANS



CEREAL BOXES



CARDBOARD BOXES
(flattened)



MAGAZINES



GLASS BOTTLES & JARS



TIN/STEEL CANS



PAPER
(brown bags, high-grade paper)



JUNK MAIL



NEWSPAPER



Please **DO NOT** place the following items in your curbside recycling bin.
DO NOT bag recyclables in plastic bags.



FOOD



PLASTIC BAGS & TRASH



PLASTIC GROCERY BAGS



PLASTIC FOOD CONTAINERS



HOSES



CAR PARTS



PLASTIC FILM & BUBBLE WRAP



SHARPS



ROPES



NAPKINS



CLOTHING



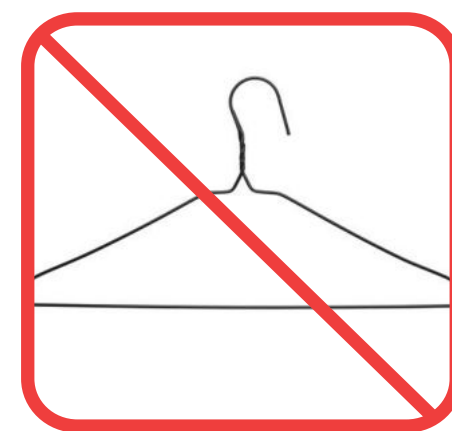
SYRINGES



PLASTIC CUPS & PLASTICWEAR



SHREDDED PAPER



WIRE HANGERS



DIAPERS

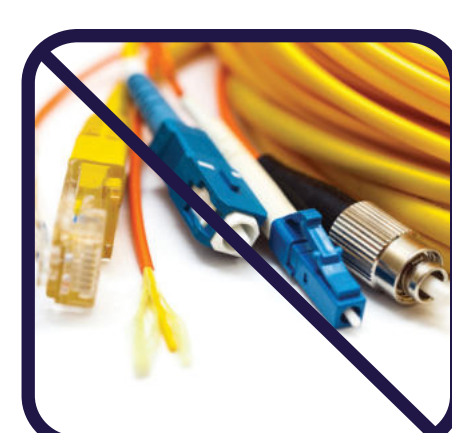
Most of these items are considered unrecyclable and belong in the trash. Propane tanks, batteries, cords and scrap metals, highlighted below, can be safely recycled at any of the four Full-Service Recycling Centers in specifically designated bins.



PROPANE TANKS



BATTERIES



CORDS



SCRAP METAL