



WipeOutWaste.com



Contents

What's Inside?

About Us pg 2

How Can I "Recycle Right"?

What Can I Recycle? pg 3
Household Hazardous Waste pg 5
Recycling Locations pg 8
Construction & Demolition pg 9
Disposing of Pharmaceuticals pg 10

How Does My Recycling Program Work?

Quick Find: Your Municipality pg 11
Charlotte pg 12
Cornelius pg 13
Davidson pg 14
Huntersville pg 15
Matthews pg 16
Mint Hill pg 17
Pineville pg 18
Multi-Family Communities pg 19

Where Does It All Go?

Recycling Centers pg 20
Metrolina Recycling Facility pg 21
Foxhole Landfill pg 22
Compost Central pg 23

How Can I Recycle Away From Home?

Schools pg 24
Faith-Based pg 25
Event Recycling & Recycle the Runway pg 26
Business/Commercial Recycling pg 27

Before & Beyond the Curb How Else Can I Help?

Waste Reduction pg 29
Contamination pg 31
Food Waste pg 32
Litter Prevention pg 33

What Is In This Guide?

An introduction about trash and recycling in Mecklenburg County.

Who Do I Contact?

Visit Mecklenburg County's Web site at www.wipeoutwaste.com, email us or call one of these numbers for assistance:

General Inquiries 311 or
(24-hour, automated line) 980.314.3867 (DUMP)

Recycling and Garbage Collection Numbers

City of Charlotte 311 or 704.336.7600
Town of Cornelius 704.892.6031
Town of Davidson 704.393.6900
Town of Matthews 704.393.6900
Town of Mint Hill 704.545.9726
Town of Huntersville 704.875.6541
Town of Pineville 704.714.9400

Mecklenburg County Program Information

Email Inquires To:

SolidWaste@mecklenburgcountync.gov

Surrounding Counties:

Cabarrus County 704.920.3278
Catawba County 704.462.1348
Gaston County 704.922.7729
Iredell County 704.878.5430
Lincoln County 704.732.9030
Rowan County 704.216.8589
Stanley County 704.986.3698
Union County 704.296.4213



RECYCLE

Whether you are a long-term Mecklenburg County resident, or new to the area, it's important to know exactly how your local solid waste program operates.

What You See at the Curb...

Typically, your curbside collection is managed and funded by your local municipality through local tax dollars or fees. If you live in a single-family household, the City or Town supplies you with carts for garbage and recycling and likely offers additional services for other types of waste removal and recycling; NOT Mecklenburg County.

Multi-family housing is addressed on page 19. Unincorporated areas are addressed on page 11.

A detailed list of the services offered by each municipality can be found starting on page 11.

What Happens Beyond the Curb...

Mecklenburg County does not collect your waste or recycling, however we do operate four Full-Service Drop-off Centers and five self-service "recycling only" centers (map on page 8.)

In addition, Mecklenburg County Solid Waste:

- Owns and oversees the Metrolina Recycling Facility (MRF), where the vast majority of the recyclables collected within the county are processed, sorted, and prepared for market.
- Owns and operates the Foxhole Landfill, a facility focused on the disposal of construction and demolition materials.
- Owns and operates Compost Central, a mulch and composting facility where the vast majority of Mecklenburg County's yard waste is stored, processed, and offered for sale.
- Produces county-wide solid waste educational efforts and marketing.
- Coordinates programs that promote and establish recycling and waste reduction programs in local businesses, schools, colleges and universities, faith-based organizations, and county facilities.

Mecklenburg County operates as an "enterprise fund". This means that tax dollars are not used for programs or operations. All of MCSW's funding comes from direct disposal fees and revenue from the sale of recyclable and reusable materials.

MECKLENBURG CO. North Carolina 600

Residential Convenience Center Entry

NON-County Entry Vehicle

VALID THROUGH: June 30, 2018

The Entry Sticker System

All residential and non-residential vehicles that utilize Mecklenburg County's Full-Service Drop-off Centers must display a sticker that will determine the payment level for services such as the disposal of bulky items, tires, yard waste, construction and demolition materials, and certain bagged trash.

Stickers are available at the cashier's booth at each Full-Service Drop-off Center.

Stickers are free for Mecklenburg County residents and business/commercial vehicles. A sticker fee is required for non-Mecklenburg County residents.



How Can I "Recycle Right"?

Know What Can & Can Not Be Recycled in Mecklenburg County

What Can I Recycle In My Cart At Home (Curbside)?

Mecklenburg County has a robust recycling program that ranks in the top 10 out of 100 Counties in N.C. for the successful recovery of recyclable materials per person. To keep our program a success, the City of Charlotte, and the Towns of Cornelius, Davidson, Huntersville, Matthews, Mint Hill and Pineville encourage you to follow the disposal guidelines below.

What Can Go In My Curbside Recycling Container?

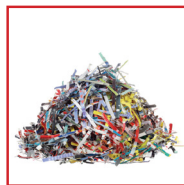
- Plastic Bottles & Jugs (with necks)
- Paper & Magazines
- Milk & Juice Cartons
- Glass Bottles & Jars (lids on - ok)
- Empty Metal Cans
- Cardboard & Small Boxes (clean pizza boxes - ok)



These items can also be taken to any County Recycling Center, as listed on page 8.

Not In Curbside Recycling*

- Shredded Paper*
- Paper Plates
- Plastic Food Trays & Cups
- Takeout Food Containers
- Styrofoam*
- Other Non-Recyclable Household Garbage
- Napkins
- Plastic Cups & Plasticware
- Diapers
- Hoses



* Some items listed above can be recycled at Full-Service Centers, local retailers, grocery stores or other outlets.

What Can I Recycle at Full-Service Centers

What Is Accepted at Full-Service Drop-off Centers?

Anything you can recycle in your curbside container PLUS...

- Appliances
- Yard Trimmings
- Computer Equipment
- Electronics
- Household Hazardous Waste
- Light Bulbs (Fluorescent)
- Automobile Tires
- Used Motor & Cooking Oils
- Bicycle Tires
- Enhanced Recycling
- Clothing



Locations of Full-Service Drop-off Centers listed on page 8.

Important Reminder!

Never put electronics or batteries in your curbside recycling containers. They can cause fires. Please dispose of these materials at one of our Full-Service Drop-off Centers.

Take Back to Retailers or Donate

- Auto Parts
- Cell Phones
- Plastic Shopping Bags/Film Plastic
- Pots & Pans
- Wire Hangers
- Ceramics



*** NOTE: All of the items listed above require "Source Separation" and can not be recycled together. Separate bins are available at the Drop-off Centers.**



Household Hazardous Waste (HHW) Disposal

Protect Your Home

Many of the products found in the kitchen, bath, utility, and garage shelves contain hazardous or toxic chemicals. The misuse or improper disposal of these products can pose a threat to your health. Long-term or cumulative problems, such as contamination of drain fields, septic systems, and surface and groundwater can also occur. Products containing hazardous substances must include a warning and description of the hazard. **The County only allows HHW from residential customers. No business hazardous waste is allowed due to EPA regulations.**

Bedroom:

- Carpet Cleaner
- Dry Cleaning
- Furniture Cleaner
- Furniture Polish
- Mothballs
- Shoe Polish

Bathroom:

- Aerosols
- Asbestos Floor Tiles
- Disinfectant
- Drain Cleaner
- Floor Cleaner
- Hair Color
- Hair Permanent
- Hair Spray
- Hydrogen Peroxide
- Isopropyl Alcohol
- Mildew Remover
- Nail Polish
- Nail Polish Remover
- Scouring Powder
- Toilet Cleaner

Living Room:

- Carpet Cleaner
- Fireplace Cleaner
- Furniture Cleaner
- Furniture Polish

Garage:

- Aerosols
- All Purpose Cleaner
- Aluminum Cleaner
- Asbestos
- Asphalt/Roofing Tar
- Exhaust Fumes (Carbon Monoxide)
- Glues & Adhesives
- Paint
- Paint Thinner
- Paint & Varnish Remover
- Photography Chemicals
- Pool Chemicals
- Septic Tank Cleaner
- Solvent
- Sulfuric Acid
- Wood Preservatives

Automotive Supplies:

- Antifreeze
- Transmission Fluid
- Batteries-Dry Cell
- Batteries-Wet Cell
- Brake Fluid
- Car Wax
- Carburetor Cleaner
- Engine Degreaser
- Gasoline
- Kerosene & Diesel Fuel
- Motor Oil
- Petroleum Distillates
- Windshield Wiper Solution
- Lithium-Ion

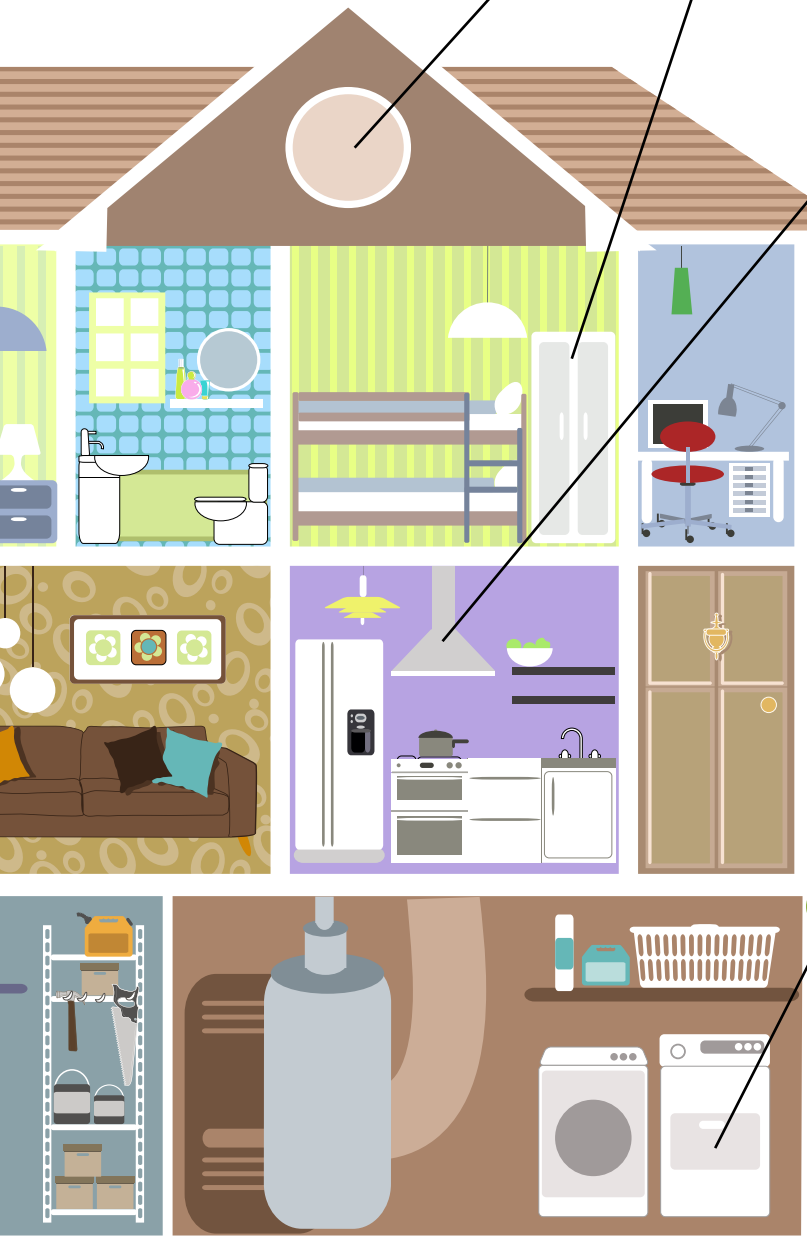


Common Household Hazardous Materials Accepted at HHW

Even though it's tempting, don't pour grease down the drain of your kitchen sink. It can get in the water system, as well as clog up your drain. Instead, pour grease into a container or coffee can or blot up with absorbent materials like kitty litter or paper towels and place into regular trash.

What is hazardous?

It's not always easy to tell whether or not a material is hazardous. Potentially hazardous materials are commonly stored in almost every room of the house.



Attic:

- Arts & Crafts
- Asbestos
- Glues & Adhesives
- Mothballs
- Paint
- Paint Thinner
- Paint & Varnish Remover
- Plastics
- Rodent Killer
- Smoke Detector

Closet & General Supplies:

- Aerosols
- All Purpose Cleaner
- Aluminum Cleaner
- Air Freshener
- Carpet Cleaner
- Floor Cleaner
- Furniture Cleaner
- Furniture Polish
- Insect Repellent
- Shoe Polish

Kitchen:

- All Purpose Cleaners
- Aluminum Cleaners
- Bleach
- Gas Stove
- Detergent
- Disinfectant
- Drain Cleaner
- Floor Cleaner
- Oven Cleaners
- Roach Killer
- Rodent Killer
- Scouring Powder

Kitchen grease can be recycled at Full-Service Drop-off Centers listed on page 8.

Laundry Room / Basement:

- All Purpose Cleaners
- Bleach
- Carpet Cleaner
- Detergent
- Drain Cleaner
- Dry Cleaning
- Dyes
- Floor Cleaner
- Shoe Polish
- Smoke Detector
- Spot Remover

Garden Supplies:

- Arsenic
- Herbicides
- Fertilizer
- Insecticides
- Insect Repellent
- Rodent Killer

NOTE: Alkaline (non-rechargeable) batteries are not considered hazardous and can be thrown away with your residential trash.

Paint Use/Reduction Tips

Buy just what you need. Save money and reduce waste by knowing how much paint you really need before going to the paint store. Painting projects require about one gallon of paint to cover 400 square feet of smooth surface. Choose the correct color before buying a quart of paint. Buying quart after quart of paint in order to find the perfect shade of color wastes paint and money.

Household Hazardous Waste Disposal

Many excess or expired household hazardous waste (HHW) materials can be taken to the Full-Service Drop-off Centers where it's collected for proper disposal.



Toxic: The product can cause injury or death if swallowed, absorbed, or inhaled. Examples are: rat poison; weed killers; antifreeze; mercury; and, insect killers.



Flammable: The product can be ignited by a flame, spark, ignition source or hot surface under almost all temperature conditions. Examples are: lighter fluids; turpentine; paint; paint thinner; kerosene; propane and gas cylinders; adhesives, old gasoline, etc.



Corrosive: The product is a chemical or releases vapors that can burn or destroy living tissues at the site of contact and deteriorate or wear away the surface of the material. Examples are: bleach; pool chemicals; strong chemicals; acids; and caustics.

Be Aware!

Read Labels: Consumer products containing hazardous substances must be labeled with a warning and description of the hazards. Make sure you know which products are toxic, how to use them properly, and how to dispose of them responsibly.

Use Alternatives: There are a number of non-toxic product alternatives available for sale, or you can make your own recipes.

Share: Avoid purchasing more product than you can use within a reasonable period of time, but if you do have leftover product, check with friends, neighbors, and community groups to see if they have a need for excess items such as paint, yard products, or solvents.



Recycling Locations

Curbside recycling service is available to all single-family residences in Mecklenburg County. See page three for a list of items accepted curbside. In addition, the County operates other types of Recycling Centers that are conveniently located throughout Mecklenburg County. The list of accepted recyclables, and whether the location is open to residents and/or businesses varies by location. Please call 311 or email SolidWaste@MeckNC.gov if questions.

Jurisdictions

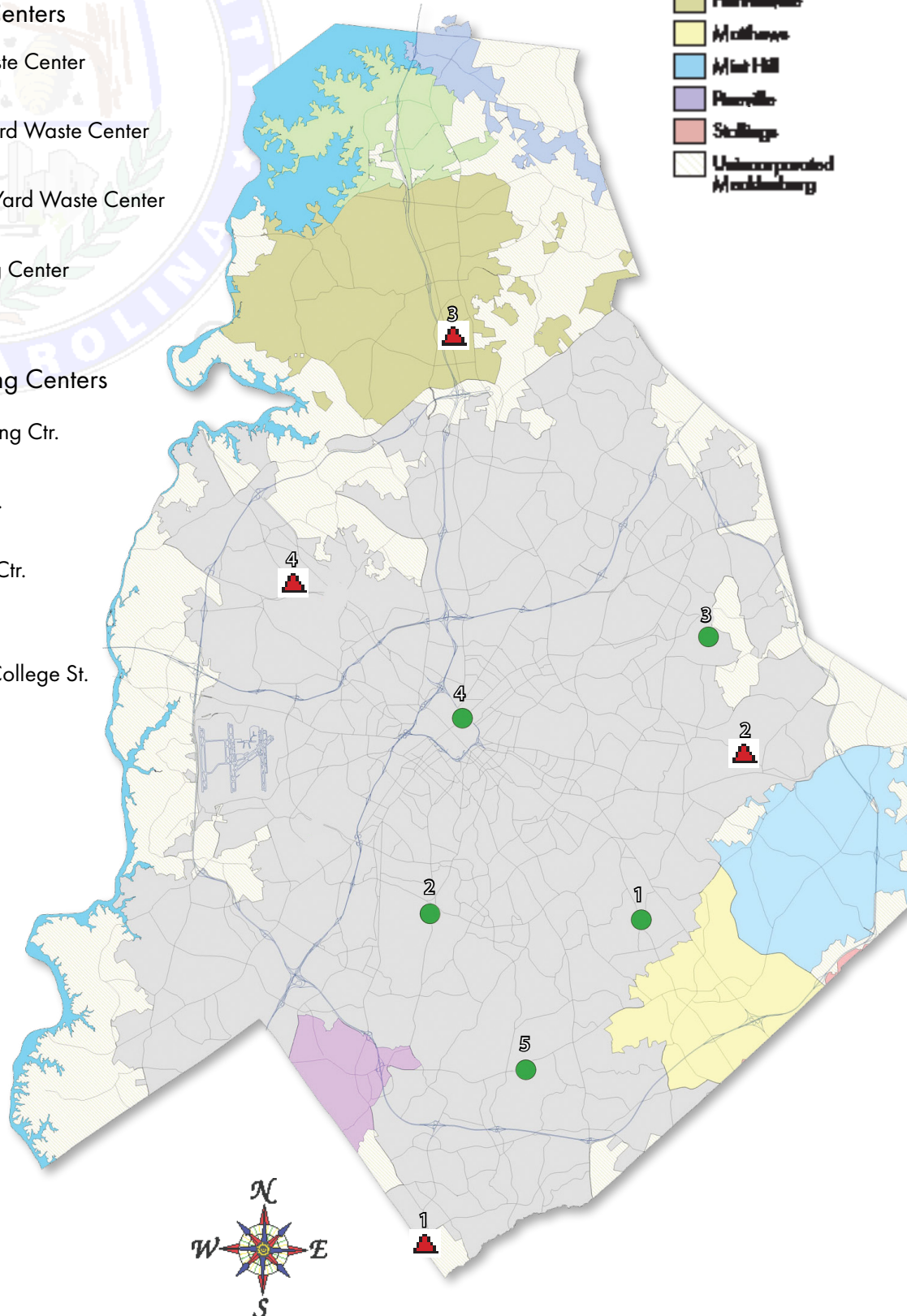
Charlotte
Cornelius
Davidson
Harrisville
Matthews
Mint Hill
Pineville
Stallings
Unincorporated Mecklenburg

Staffed, Full-Service Drop-off Centers

1. Foxhole Recycling/Yard Waste Center
17131 Lancaster Highway
2. Hickory Grove Recycling/Yard Waste Center
8007 Pence Road
3. N. Mecklenburg Recycling/Yard Waste Center
12300 N. Statesville Road
4. Compost Central & Recycling Center
140 Valleydale Road

Unstaffed, Self-Service Recycling Centers

1. McAlpine Creek Park Recycling Ctr.
8711 Monroe Rd.
2. Park Road Park Recycling Ctr.
5300 Closeburn Rd.
3. Reedy Creek Park Recycling Ctr.
2900 Rocky River Rd.
4. Uptown Recycling Ctr.
11th St. Between Tryon and College St.
5. William R. Davie Park
4635 Pineville Matthews Rd



Construction & Demolition Recycling

Are you remodeling a home? Do you have a business that's involved in construction, demolition, or remodeling? If the answer is yes, you should be aware that many construction and/or demolition waste materials can be recycled.

Here is a list of construction materials that can be recycled locally:

Asphalt Paving Materials

Corrugated Cardboard

Asphalt Shingles

Gypsum "Drywall" (unpainted) *

Carpet and Carpet Pad

Land Clearing Debris

Ceiling Tiles

Metals (steel beams, aluminum gutters, ductwork, copper piping)

Concrete, Brick, Block and Stone *

Wood Waste (untreated, unpainted)



Asphalt paving material and roofing shingles, concrete, brick, and masonry block are processed and used in road construction. Clean wood can be ground and used for mulch or as fuel. The calcium and sulfur in drywall are desirable soil amendments in agriculture. Carpet pad is readily recyclable and some carpet fibers such as nylon and polypropylene can also be recycled.

Recycling at construction/demolition job sites may save you and your contractor money in addition to being good for our environment. Excess materials from construction projects may be used in future projects and many materials can be recovered pre-demolition from existing sites. For example, windows, doors, faucets, cabinets, and sinks can be salvaged and re-used. The local Habitat for Humanity accepts donations of new and gently used furniture, home accessories, building materials, and appliances and will even pick-up your donation at no cost. Many metals can be sold to local recycling/salvage companies. Even brick and stone can be carefully removed and reused on other projects. If material can't be reused or donated, Mecklenburg County residents can bring their construction and demolition wastes for disposal to any Full-Service Drop-off Center (see page 8). For information on disposal fees or assistance in reducing or recycling construction/demolition waste, please email solidwaste@mecknc.gov or visit www.WipeOutWaste.com.

Secure Your Load!

Roughly half of roadside litter is "blown not thrown" from passing vehicles because covers are not used to contain the material. Roadside litter is unsightly and expensive to remove. Other cars on the roadways are at risk when material is blown onto windshields or falls onto the roadways without warning. By requiring that all loads going in and out of your construction site be properly covered, secured, and contained to prevent spillage and blowout—whether they are on pickup trucks, dump trucks or material delivery trucks—you'll be doing your part to reduce litter and potential risk to other motorists.

Note: Concrete & clean drywall are accepted at reduced fees at the Foxhole Landfill to encourage recycling.

Disposing of Pharmaceuticals

The following sites within Mecklenburg County are equipped with drop-off boxes for unused medication:

- **Matthews Police Department** 1201 Crews Rd., Matthews.
- **Mint Hill Police Department** 7151 Matthews-Mint Hill Rd., Mint Hill.
- **Mecklenburg County Sheriff's Office** Jail North location, 5235 Spector Dr., Charlotte.
- **Charlotte-Mecklenburg Police Department** Main Office, 601 E. Trade St., Charlotte.

Do not flush prescription drugs down the toilet unless the information on the container specifically instructs you to do so.

If you are unable to drop off your excess medication at the aforementioned sites, you should follow the specific disposal instructions on the drug label or patient information that accompanies the medication. You can also contact local pharmacies to inquire about pharmaceutical take-back programs. Visit **disposemy meds.org** to find a pharmacy near you. See text box below pertaining to Envision Charlotte and prescription bottles.

Empty prescription bottles without labels can be disposed at:
Innovation Barn, 932 Sei8gle Avenue, Charlotte, NC 28205 (www.envisioncharlotte.com)



Bottles can now be recycled with caps & labels ON!
Leave caps & labels ON bottles!

<https://www.plasticfilmrecycling.org/>



YOU CAN TAKE IT BACK!

CLEAN & DRY PLASTIC FILM PACKAGING, BAGS & WRAPS

Many local grocery stores and large retailers accept these items in storefront recycling bins.

NO Candy bar wrappers, chip bags, six-pack rings or degradable bags

RecycleTheWrap.com

How Does My Recycling, Yardwaste & Garbage Program Work?

Homeowners & Renters

If you are a home owner or renter in Mecklenburg County, please check the information for your municipality.

Multi-Family Community (Apartments, Townhomes, Condominiums)

If you reside in a multi-family community that doesn't offer curbside collection, please check our Multi-Family Household Recycling Information on page 19.

Unincorporated Areas of Mecklenburg County

If you live in an unincorporated area of Mecklenburg County, you can take your garbage and recyclables to one of the Full-Service Drop-off Centers (see map on page 8) or you can contract with a private garbage/recycling hauler. Residents that live outside of the city or town limits are responsible for finding a collector unless your HOA or community provides collection service. A list of haulers can be found at www.WipeOutWaste.com.

NOTE: Charges may apply at Drop-off Centers

Quick Find! Your Municipality

City of Charlotte.....	page 12
Town of Cornelius	page 13
Town of Davidson.....	page 14
Town of Huntersville.....	page 15
Town of Matthews	page 16
Town of Mint Hill.....	page 17
Town of Pineville	page 18

Put Only These Items in your Recycling Roll-out Bin!



Plastic Bottles & Jugs
(with necks)



Paper & Magazines



Milk & Juice Cartons



Glass Bottles & Jars
(lids on - ok)



Empty Metal Cans



Cardboard & Small
Boxes
(clean pizza boxes - ok)

Visit www.wipeoutwaste.com for what can be recycled



City of Charlotte—Curb-It!

Garbage and yard waste collection services are provided weekly. Recycling collection is provided every other week but on the same day as garbage and yard waste collection. Bulky waste collection is provided on the same as other collection services but must be scheduled for collection (see “Schedule it!” below).

To ensure collection, all items must be placed curbside by **6:30 am** on your collection day. **Please do not block the sidewalk.** Garbage and recycling carts must be removed from the curb by midnight on your collection day. For additional information on Curb it! visit curbit.charlottenc.gov or call CharMeck **311 (704.336.7600)**.

Need a second garbage or recycling cart? Call CharMeck **311 (704.336.7600)** to order a second cart. The price for the additional cart is \$40 each. The second recycling cart will have a different color lid which will easily identify it as a second cart. Collection service for two recycling carts will only be provided to residences with a primary recycling cart and identified second recycling cart.

Recycle it! **Recycling Preparation Tips**

- Rinse and remove all food/liquid residue from recyclable items.
- Do not bag recyclables.
- Place the recycling cart within six feet of the curb and at least three feet away from other collection items (garbage cart, yard trimmings and bulky waste) and obstacles such as mailboxes, vehicles, telephone poles, etc.

Prep it! **Yard Trimmings Preparation Tips**

- Trimmings from shrubs and trees must be no longer than five feet in length and no larger than four inches in diameter.
- Cut limbs and logs to four inches in diameter.
- Place leaves and grass clippings in untied plastic bags, untied kraft (brown paper) bags or uncovered trash cans (not City-issued rollout carts). Piles should be separated and sorted by type of yard waste (limbs, loose debris, bagged/container or logs). Separated piles should be no longer than five feet long and three feet high.
- Allow two feet between each pile.
- Place yard waste within six-feet of the curb and at least three feet away from other collection items (rollout carts, bulky waste) and obstacles such as vehicles, mailboxes, telephone poles, etc.

Schedule it! **Bulky Waste Preparation Tips**

Items such as household furnishings, appliances, mattresses, box springs, lawn equipment and similar items too large to be placed in the garbage rollout cart and not eligible for recycling or yard trimmings collection are considered bulky waste. If the bulky waste is a reusable item, such as furniture or building supplies, consider donating to a non-profit organization. Contact Goodwill Industries, United Way, Habitat for Humanity Restore, the Salvation Army, or Crisis Assistance Ministry for more information.

Bulky waste must be scheduled for collection. Items placed at the curb without scheduling **WILL NOT** be collected. Place bulky waste at the curb no later than 6:30 am on the day you are scheduled for collection. To schedule your bulky waste collection, call CharMeck **311**, visit curbit.charlottenc.gov or download the Mobile App from your mobile device app store.

Bag it! **Garbage Preparation Tips**

- Bag all garbage before placing it in the rollout cart. Garbage only! Recyclables should not be bagged.
- Do not overfill carts.
- Place the garbage cart within six feet of the curb and at least three feet from other collection items (recycling rollout cart, yard waste and bulky waste) and obstacles such as mailboxes, vehicles, telephone poles, etc.



Town of Cornelius

Contact Number

980.255.3800 (Waste Pro), 704.892.6031 (Town Hall)

Website

www.Cornelius.org

Service Provided

The Town of Cornelius contracts with Waste Pro to provide solid waste collection services to its residents. Currently, over 9,000 households in the Town of Cornelius receive curbside recycling services.

Containers

Waste Pro will provide one blue recycling collection cart and one green garbage collection cart per single family household. If residents prefer to have more than this, they must incur the charges themselves and this is the only time they would ever be billed directly.

Collection

Garbage is collected weekly, and recycling is collected bi-weekly on the day of your garbage pick-up. Recycling must be curbside by 6:00 am on collection day. All items must be placed in the collection cart. Recycling week schedule can be found at www.cornelius.org

Accepted Recyclables

All recyclables should be placed directly in recycling containers. Please do NOT bag recyclables. See page 2 for acceptable items.

Bulky Waste

Residents can drop off bulky items and recyclables at the North Mecklenburg Recycling Center located at 12300 N. Statesville Road. If you need additional information call 311, or 704.892.6031, or visit www.Cornelius.org.

Residents can also individually contract with a private hauler.

Yard Waste

Cornelius offers weekly service of yard trimmings on the same day as garbage collection. Limbs cannot be any larger than five inches in diameter and no longer than four feet in length. The piles must not be any taller than four feet tall and four feet wide. Bagged leaves are collected year-round in either tied transparent bags, or untied opaque bags. Cornelius also offers a leaf vacuuming service for leaves placed at the curb from November 1st until January 15th.

Closest Full-Service Drop-off Center

North Mecklenburg Recycling Center located at 12300 N. Statesville Road. (See page 8.)



The Town of
Davidson

College Town, Lake Town, Your Town

Town of Davidson

Contact Number

980.255.3800 (Waste Pro), 704.892.7591 (Town Hall)

Website

www.townofdavidson.org/GarbageSchedule

Service Provided

Recycling is available to all Davidson single and multi-family households through a contract between the town and Waste Pro. In addition to recycling, Waste Pro provides garbage, yard trimmings and bulky waste collection.

Containers

Residents are provided 96-gallon collection carts. The red collection cart is for single stream recycling and the black container is for garbage. For collection carts please visit www.townofdavidson.org/garbageschedule and click on the online request form.

Collection

The collection schedule varies based on the location in Davidson. Details can be found at www.townofdavidson.org/GarbageSchedule. Garbage is collected Monday through Thursday, and recycling is collected with garbage every other week. To report service problems, visit www.townofdavidson.org/garbageschedule and click on the online request form

Accepted Recyclables

All recyclables should be placed directly in recycling containers. Please do NOT bag recyclables. See page three for acceptable items.

Bulky Waste

Residents may schedule a bulky waste collection of no more than four cubic yards of uncompacted trash by visiting www.townofdavidson.org/garbageschedule and click on the online request form.

Items collected, but not limited to, bulky items, boxes, furniture.

Items NOT collected are "white goods" (appliances such as refrigerators, stoves, washers, dryers, water heaters, etc.) These items can be taken to the County's North Mecklenburg Recycling Center located at 12300 N. Statesville Road.

Yard Waste

Bagged leaves will be collected on the same day as garbage collection. All bagged leaves must be free of sticks and other debris. Residents are allowed up to 20 bags per week. Bags cannot be larger than 40 gallons in size and cannot be more than 50 pounds in weight. Limbs cut less than six feet in length and four inches in diameter are also collected. The total amount of yard trimmings cannot exceed four cubic yards.

Closest Full-Service Drop-off Center

North Mecklenburg Recycling Center located at 12300 N. Statesville Road. (See page 8).



Town of Huntersville

Waste Connections Of The Carolinas
5516 Rozzelles Ferry Rd. Charlotte NC, 28214

Phone
704.398.4488

Website
www.huntersville.org

Service Provided

Citizens of the Town of Huntersville who live in a single-family house will be provided with curbside solid waste services. The Town contracts its garbage collection, yard trimmings and recycling services to a private contractor, Waste Connections of the Carolinas.

Containers

Residents are given a green cart for yard waste collection, a grey cart for garbage collection and a blue cart for recyclables. Yard trimmings and garbage are collected weekly, and recycling is collected bi-weekly. All three containers are provided. Additional carts can be purchased through Waste Connections of the Carolinas (704.398.4488).

Collection

Since recycling is collected bi-weekly, recyclables are collected on designated pickup days during recycling week one or week two. Recycling week schedule is at www.huntersville.org. Recycling must be curbside by 7:00 am on your collection day. Contact Waste Connections of the Carolinas to report service issues (704.398.4488). Residents attempting to recycle banned items will be tagged as non-compliant. If brought into compliance, carts will be collected at the next regularly scheduled pick-up date.

Accepted Recyclables

All recyclables should be placed directly in recycling containers. Please do NOT bag recyclables. See page three for acceptable items.

Bulky Waste

Residents must pay a fee and fill out an application for bulky waste removal. Forms, fee schedule, and acceptable items are available at www.huntersville.org. Residents may also haul items to the County's North Mecklenburg Recycling Center located at 12300 N. Statesville Road.

Yard Waste

Residents are provided a yard waste collection cart for weekly collection of small amounts of yard waste. Large amounts of yard waste are collected for fees based on size. Fee schedule and application is available at www.huntersville.org. Residents may also haul yard waste to the County's North Mecklenburg Recycling Center located at 12300 N. Statesville Road.

Closest Full-Service Drop-off Center

North Mecklenburg Recycling Center located at 12300 N. Statesville Road. (See page 8).



Town of Matthews

Contact Number
704.393.6900 (Republic Services)

Contact Email
garbage@matthewsnc.gov

Website
www.matthewsnc.gov

Service Provided

The Town of Matthews encourages all citizens and businesses to recycle. In addition to garbage and yard waste collection, curbside recycling is provided free of charge. The Town has launched a voluntary recycle program for small businesses that are eligible to receive garbage collection in Matthews. It is provided at no cost to participating businesses.

Containers

The Town provides each residence with a 96-gallon green recycling cart, and collects recyclables every other week the same day the blue garbage cart is collected. Additional recycling containers are available for a one-time fee, contact the Town of Matthews. One blue 96-gallon can for trash is provided also. Additional trash containers are available for a monthly charge, contact Republic Services at 704.393.6900.

Collection

Garbage and recycling containers must be curbside by 6:30 am on collection day. All carts should be placed three feet away from each other or other obstructions, such as mailboxes. Carts must be placed with the handle facing the residence and the silver bar facing the street. Overflow recyclable items may be placed in a clear plastic bag and placed beside the recycling cart.

Accepted Recyclables

All recyclables should be placed directly in recycling containers. Please do NOT bag recyclables. See page three for acceptable items.

Bulky Waste

Special pick up for white goods and bulky items, such as stoves, refrigerators, water heaters, mattresses, carpet (must be rolled and tied) and furniture can be scheduled by calling 704.393.6900.

Yard Trimmings

Leaves and grass clippings must be bagged in clear bags or other bags left open so the driver can see the contents. Bags must weigh less than 50 pounds each, with a 20 bag limit per week. (Drivers can spend no more than 20 minutes per home collecting yard trimmings). Branches must be cut to no more than 4 feet long and 5 inches in diameter. Stack limbs in small enough piles that an individual is able to handle. Do not block sidewalk or street.

Closest Full-Service Drop-off Centers

Hickory Grove Recycling Center at 8007 Pence Road
Foxhole Recycling Center at 17131 Lancaster Highway. (See page 8.)



Town of Mint Hill

Contact Number

704.545.9726 (Town Hall), 980.892.3003 (Waste Pro)

Website

www.minthill.com

Service Provided

Citizens in the Town of Mint Hill receive household solid waste and recycling collection services through a contract between the Town of Mint Hill and Waste Pro, the solid waste service provider.

Containers

Each single-family household receives 96-gallon roll-out carts from Waste Pro along with information on provided services. The green cart is for garbage and is collected weekly. The blue cart is for recycling and is collected on a bi-weekly schedule.

Collection

Bins should be placed at the curb by 7:00 am on collection day. Holiday schedule is posted at the Town website www.minthill.com

Accepted Recyclables

All recyclables should be placed directly in recycling containers. Please do NOT bag recyclables. See below for closest Full-Service Drop-Off Center.

Bulky Waste

Bulk items and other items not contracted for collection by the Town must be privately hauled to the appropriate facility. "White goods" (Appliances like stoves, refrigerators, washers & dryers) will be picked up if prearranged by contacting Waste Pro. (980.892.3003)

Yard Waste

Limbs and brush should be separated from other waste. These should be left not more than five feet in length and not over six inches in diameter. Never place more than one pile of limbs or brush, approximately four feet high by four feet wide and five feet in length, at the curb each week. If yard waste exceeds these specifications, no service will be provided.

Closest Full-Service Drop-off Center

Hickory Grove Recycling Center at 8007 Pence Road.
Foxhole Recycling Center at 17131 Lancaster Highway. (See page 8).



Town of Pineville

Contact Number

704.889.2291 (Town Hall), 980.892.3003 (Waste Pro)

Website

www.pinevillenc.gov

Service Provided

Citizens of Pineville receive solid waste and recycling services through a contract between the Town of Pineville and Waste Pro. New residents wishing to establish service, and current residents with service issues should also call Waste Pro directly (980.892.3003).

Containers

Large green rollout containers are used for both regular household trash and recycling. Recycling containers are marked with a sticker of acceptable recyclable materials on the lid.

Collection

Recycling and yard waste for Pineville are collected on Wednesdays. Yard waste weekly and recycling bi-weekly. A schedule of holidays and collection news is posted on the Town's website at www.pinevillenc.net. Rollout containers should be placed at the curb no earlier than the night before pickup and removed from the curb by the evening of the pickup.

Accepted Recyclables

All recyclables should be placed directly in recycling containers. Please do NOT bag recyclables. See page three for acceptable items.

Bulky Waste

Pick-up of large, bulky items such as furniture or old appliances (no televisions or computers) must be scheduled directly with Waste Pro (980.892.3003). Household hazardous waste items such as tires, oil, paint cans, batteries, and propane tanks will not be picked up, nor will any construction materials (which must be removed by the construction contractor).

Yard Trimmings

Tree limbs should be bundled and no longer than three feet in length. Leaves and other yard debris can be bagged in clear or colored bags. If using a colored bag, leave it loosely tied so the contents can be verified.

Closest Full-Service Drop-off Centers

Foxhole Recycling Center at 17131 Lancaster Highway.

Multi-Family Households

For Residents

Many multi-family communities have privately contracted for recycling services and placed containers on the property for this use. Check with your property management services personnel to understand any requirements on the types of recyclables that are accepted and where the recycling containers are located.

If your complex has not realized the benefit of providing recycling, Mecklenburg County operates four Full-Service Drop-off Centers and seven Self-Service Recycling Centers for all residents of Mecklenburg County. These centers accept all the recyclables that are collected curbside throughout the County. The Full-Service Drop-off Centers accept additional materials that cannot be disposed of in regular trash or recycling container. More information is on page 3.

Additional locations for recycling can be found through our Recycling Center Locator on our wipeoutwaste.com website. Please call 311, or your local municipality if you have any additional questions on multi-family recycling.

For Property Managers

Mecklenburg County is committed to supporting multi-family residents and property managers in their recycling programs. Our multi-family "Recycle Right" campaign is the perfect way to build awareness about the importance of environmental sustainability. The educational pieces encourage residents to make a positive difference in maintaining a sustainable environment by learning the Do's and Don'ts of recycling, and other ways to help ensure sustainability through simple solutions such as, changing their thermostats, water conservation, and much more that benefits the resident, the complex and the greater community!

Mecklenburg County's "Recycle Right" campaign will provide property managers with educational materials that includes posters, door hangers, flier, newsletter banners or articles. These materials provide the tools to build awareness and make positive changes in your community.

For more information, contact us at solidwaste@mecknc.gov

If your location does not provide recycling service – or if you have recyclable items that are not accepted – you can still participate!

Find your local Recycling Center at WipeOutWaste.com/RecycleCenters

Full-Service Drop-off Centers

Full-Service Drop-off Centers

Full-Service Drop-off Centers accept all items allowed in curbside residential recycling PLUS an extensive list of other items (as listed below), including household hazardous waste. The Centers are partially funded through the County's residential availability waste fee, which means County residents are not charged a disposal fee for most recyclable items. Full-time staff is available to assist you Monday through Saturday from 7am to 4 pm. Mecklenburg County residents and businesses can bring the following materials to these centers, however, there are limitations as to what businesses are allowed to drop off and are subject to disposal item fees.

Items Accepted: Note - Materials Must be Separated

- Household garbage - limit 5 bags/per day - No Charge
- Appliances
- Tires (Up to 5 accepted at no charge; tires on rims require an additional fee.)
- Scrap aluminum & metal (bed frames, swing sets, metal poles, etc.)
- Foam rubber (carpet padding)
- Electronics (computers and televisions)
- Paper (newspapers, magazines, catalogs, junk mail, telephone books, white and colored office paper and flattened cardboard)
- Plastic bottles
- Glass jars and bottles
- Metal cans
- Cooking grease (please place in containers)
- Motor oil, antifreeze, transmission fluid & oil filters (5-gallon limit)
- Batteries (lead acid car, household, Ni-Cad and rechargeable)
- Paint and oil cans
- Fire extinguishers

OUR CUSTOMERS

Mecklenburg County Drop-off Centers receive, on average, 2,000 customers a day.

Yard Trimmings

Yard trimmings are banned from North Carolina landfills so County residents can dispose of yard trimmings through residential curbside collection. Mecklenburg County also accepts yard trimmings at the Compost Central, North Mecklenburg, Hickory Grove, or Foxhole Recycling Centers. Businesses can utilize the Centers. A fee is collected for yard trimming drop-offs at the Centers and there are vehicle restrictions; call 311 or visit www.wipeoutwaste.com for details. Yard trimmings consist of un-bagged leaves, paper bagged leaves, brush and grass clippings, and limbs less than five feet in length. All collected yard trimmings are processed to produce high quality compost and mulch products that are available for sale at Compost Central. We do not accept yard trim materials in plastic bags.

Self-Service Recycling Centers

Self-Service Recycling Centers are not staffed, but offer flexibility as to when you can drop off certain recyclable materials. You can drop off items that are accepted through curbside recycling free of charge (see page 3 for a list of acceptable items).

Construction & Demolition (C&D)

The North Mecklenburg, Hickory Grove, and Compost Central Centers, as well as the Foxhole Landfill accept C&D waste from household projects. Accepted items include:

- Wood waste (framing timbers, crates, spools, sheathing, treated/lumber/decking)
- Sheetrock
- Plastic pipes, buckets, and wrap
- Shingles, fiberglass bath fixtures, tile, ceramic
- Carpet and padding

In addition to the items above, Foxhole accepts for recycling wood waste, unpainted drywall, concrete, brick, asphalt pavement, rock, and gravel. **Visit www.wipeoutwaste.com or call 311 for fees and vehicle restrictions. Disposal fees will apply to all C&D disposal.**

Metrolina Recycling Center (MRF)

When you put a plastic water bottle, aluminum can, or piece of paper into a recycling container, have you ever thought about where it goes next? Mecklenburg County recyclables are brought to a facility close to downtown Charlotte called The Metrolina Recycling Center. This facility processes the wide range of materials obtained from the single-stream collection in residential, schools and commercial recycling programs in Mecklenburg and neighboring counties.

Recyclables brought to the facility are sorted and prepared for market. After further processing, these recyclables are turned into new products. Although the facility and the processing equipment are owned by the County, the facilities day-to-day operations are managed by a third-party vendor with vast experience running Materials Recovery Facilities (MRFs) such as the Metrolina Recycling Center.

The Metrolina Recycling Center currently processes approximately 400 tons per day, operating five days a week. Approximately 100,000 tons of recyclable materials processed annually.

Tours

Tours are not offered at this time. We have moved our "tour offerings" to our virtual platforms, available through our on-line videos or webinars.

Virtual presentations are available by emailing solidwaste@mecknc.gov.

Visit WipeOutWaste.com to see videos of the Metrolina Recycling Facility in action!



Foxhole Landfill

The Foxhole Landfill is located at the border of Mecklenburg County, Union County, and Lancaster County (SC). Presently, the landfill is accepting only construction and demolition waste and houses a Full-Service Drop-off Center.

Acceptable landfill Materials

- C & D materials
- Untreated* and treated wood
- Shingles
- Sheetrock (gypsum/drywall)*
- Plant-mixed asphalt
- PVC piping
- Plastic buckets (open)
- Brick
- Concrete*

Location

17131 Lancaster Hwy.
Charlotte, NC

Landfill Hours

Monday–Friday, 7am–4pm

Unacceptable Landfill Materials

- Asbestos products
- Metal*
- Tires*
- Liquids*
- Cardboard and paper*
- Garbage*
- Hazardous Waste*
- Appliances*
- Household garbage*
- Dead animals
- Televisions*

*NOTE: Some materials listed above are accepted at the recycling area; Not landfilled.



The Full-Service Drop-off Center at Foxhole is open for residential & limited commercial use on Saturdays from 7am - 4pm

For information about current disposal fees, please visit WipeOutWaste.com

Important Reminder!

Your curbside garbage is sent to a local municipal solid waste (MSW) landfill. These are landfills that can accept normal household waste. MSW landfills are built to comply with state and federal regulations, providing protection for ground water, air quality and adjacent properties. As such, there are a number of things that are banned from MSW landfills. These items **should never** be placed in your curbside garbage container. The banned items and proper disposal methods are listed below:

Items Banned From Disposal in NC Landfills

Put in your curbside recycling container

- **Plastic bottles** that have necks smaller than the body of the container and that accept a screw top, snap cap or other closure, such as water and juice, and laundry detergent bottles
- **Aluminum cans** Curbside Recycling.

Yard trimmings Put in brown kraft bags or use reusable containers such as a Leaf Burrito.

Bring to a Full-Service Drop-off Center for disposal as Household Hazardous Waste

- Used cooking oil
- White goods such as kitchen appliances
- Electronics including computers and televisions
- Antifreeze
- Whole scrap tires
- Lead acid batteries
- Used motor vehicle oil and oil filters

Compost Central

Yard trimmings that are gathered through residential curbside collection or brought directly to Compost Central or the North Mecklenburg, Hickory Grove, or Foxhole Full-Service Drop-off Centers, are recycled to produce high quality compost and mulch products that are available for sale at Compost Central to business, commercial and residential customers.

Compost is used in a variety of ways...as a general soil amendment, for erosion control, planting mixes, backfill mixes, lawn/turf top dressing, land reclamation, mulching and in manufacturing topsoil.

All compost produced at Compost Central meets the US Composting Council Seal of Testing Assurance (STA) Program requirements. The STA Seal means that all compost is tested to assure consistency in quality. It can be used in your gardens and on your lawns, increasing the moisture-holding capacity and adding essential organic matter to soils providing beneficial microorganisms to your soil. Compost also contains levels of the most essential plant nutrients so you can reduce the amount of chemical fertilizers.

Compost Central is open Monday through Saturday from 7am to 4pm. Products include screened and aged compost and mulches. Customers can pick-up materials using their own vehicles, or arrange for delivery for a fee.

For deliveries and current pricing information, please visit MeckMulchMadness.com.

Location

140 Valleydale Road,
Charlotte, NC 28214

Landfill Hours

Monday–Friday, 7am–4pm



How Can I Recycle Away From Home?

School Recycling

Mecklenburg County's Wipe Out Waste in Education Program was established to assist our community's public and private schools, and colleges and universities with implementing a successful recycling program. School recycling programs have changed significantly in the last few years, morphing from accepting only paper and cardboard into a robust and diverse system that accepts a full range of recyclable material.

- All forms of paper and newspaper are being collected in classrooms.
- Backroom kitchen operations are diverting metal cans and cardboard from the landfill.
- Many high school athletic fields have bins to accept plastic bottles and cans.
- CMS Cafeterias feature recycling programs that accept empty milk cartons, juice cartons, water bottles, paperboard, and aluminum cans.
- Yard trimmings and food waste are being composted and used on-site to enrich school gardens.

The County's "Be Cool! Recycle in School!" program continues to be promoted in our schools and at special events to keep recycling in the minds of educators and students. County staff helps environmental clubs with lesson plans, field trips, presentations, school gardens, composting efforts and obtaining speakers. We also hold informational workshops for school personnel to keep them updated on the latest in recyclable materials, and on programs designed to encourage and reward those schools that excel in their recycling efforts.

For Teachers, Staff & Administration

Please contact our school recycling specialist at solidwaste@mecknc.gov for assistance with setting up or revitalizing a program at your school.

For Parents

Here's how you can help:

- Pack lunches and snacks in reusable containers and thermoses to reduce the overall amount of trash
- Send cloth napkins instead of disposable ones
- Learn the full list of recyclable materials and place these materials in appropriate recycling containers
- Get involved with your school's recycling efforts and support their programs to "Be Cool! Recycle in School"



CAFETERIA FOOD WASTE DIVERSION

Charlotte-Mecklenburg Schools are currently collecting food scraps in their cafeterias.



www.wipeoutwaste.com/community/schoolresources

Event Recycling

Mecklenburg County's event recycling program enables event organizers to collect and recycle cardboard, plastic bottles, glass bottles, and aluminum cans from street fairs, concerts, sporting events, and other community events. The event can be large or small, in your neighborhood or in the greater community.

The Event Recycling Program provides website information, educational materials, presentations, and hands-on training, as well as an Event Recycling [Toolkit](#). A refundable deposit is required for the use of a predetermined number of Clear Stream upright recycling containers and collections bags.



For more information and to reserve an Event Recycling Toolkit, visit www.wipeoutwaste.com



Business / Commercial Recycling

Businesses in Mecklenburg County are committed to reducing, reusing & recycling

Business Recycling & Source Separation Ordinance

Since 2002, any business that contracts for 16 cubic yards per week or greater must recycle their office paper and cardboard. (A typical commercial garbage bin or “dumpster” has a capacity of eight cubic yards, so the ordinance would most likely affect a business if it has a standard dumpster that’s emptied twice a week.)

If an eligible business doesn’t participate as required, it will receive a notice of violation. The notice will be accompanied by an offer of technical assistance. A civil penalty will be assessed if a business fails to comply with the Ordinance within 30 days of receiving a third notice of violation.

Commercial Recycling Program

Mecklenburg County offers a paid program whereby local businesses may pay for an 8 yd recycling container for their business to recycle all items that are available to residential recycling. Please contact SolidWaste@MeckCo.gov for more information.



ABC Recycling (Alcoholic Beverage Containers)

The State of North Carolina requires holders of on-premises malt beverage permits, on-premises unfortified wine permits, on-premises fortified wine permits, and mixed beverages permits to separate, store, and provide for the collection for recycling of all recyclable beverage containers sold at retail on the premises. Violation of this statute could result in fines or possible suspension of a business’s ABC Permit.

For more information on compliance and educational assistance, please email SolidWaste@MeckCo.gov





WIPE OUT WASTE AMBASSADOR PROGRAM

Mecklenburg County Wipe Out Waste Ambassador Program

The Wipe Out Waste Ambassador Program is a free networking and educational program for Mecklenburg County residents and commercial businesses that are committed to building a stronger community through recycling and reducing waste in the workplace and in the community.

Residential Ambassador Program

Mission Statement: Increase educational awareness at a residential level within Mecklenburg County. We call this "Recycle Right."

Requirements to become an Ambassador:

- 1. Log on to MeckWOWAmbassador.com
- 2. Take the Recycle Right Pledge
- 3. Complete the applicable Application
- 4. Complete the Online Ambassador Training Modules
- 5. Commit to promoting recycling right in the community, organizations, businesses, clubs, faith-based and areas within Mecklenburg County

WOW AMBASSADOR PROGRAM

Becoming a WOW Ambassador strengthens, supports, and enhances the probability of recycling right. For more information, Log on to MeckWOWAmbassador.com, email: SolidWaste@MeckNC.gov and remember to always "Recycle Right."

Waste Reduction Programs and Tips

Enviro Shopping

Shop with the environment in mind and choose products that make the best use of energy resources, don't pollute air or water, are reusable or recyclable, are made from recycled material, and use a minimum of materials in design and packaging.

Practice the Five 'Rs' in Selecting Packaging

More than 30% of household waste is packaging. Almost everything we buy has been wrapped in a package -- or several layers of packaging -- at some point on its way from producer to consumer. While packaging provides many essential functions, it can be excessive. When you're an 'enviroshopper,' you choose products in packages that have the least amount of negative environmental impact.



Reduce the amount of packaging you buy and throw away.



Reuse packaging.



Recycle packaging whenever possible.



Reject packaging that's unsatisfactory.



Respond to producers and retailers to let them know their packaging is unsatisfactory.

Reduce Packaging

- Don't accept a plastic shopping bag when only buying a few items
- Reuse plastic grocery bags for other purposes in your home, or when shopping again
- Take your own cloth shopping bags
- Choose packaging that uses the least amount of material
- Buy products in the largest quantity possible in one package, or buy refills and add liquid

Buy Recycled

"Buying recycled" means purchasing products that contain recycled content materials. More products than ever before are being made from recycled materials. Buying recycled helps to close the recycling loop by putting recycled materials to good use as new products in the marketplace. When we buy recycled products, we communicate our desire to play an active role in the preservation of our environment.

America Recycles Day

America Recycles Day is the 15th of November. Each year, Mecklenburg County celebrates this day by hosting and participating in a number of recycling events. Past events have included secure paper shredding, the collection of electronics and batteries, and working with partners to accept gently used clothing and household items. America Recycles Day is the one day of the year dedicated to reminding us of the Reduce! Reuse! Recycle! way of life. You can learn how to participate at www.americarecyclesday.org.

Wrap Up Your Holidays With Recycling

The holidays offer many opportunities for recycling! Recycle your holiday gift wrap, cards, gift boxes, tissue paper, and cardboard in containers either curbside or at a Full-Service Drop-off Center or a Self-Service Recycling Center.

Your live Christmas tree and holiday wreaths (with all ornaments, bows and ribbon removed) are also recyclable through composting at our County-owned composting facilities. Simply place these items curbside on your regularly scheduled trash pickup day, or bring them to a Full-Service Drop-off Center.

Holiday Waste Reduction Tips

Here are a few tips to help make your holidays a little more “green”:

- Have children make their own wrapping paper by designing and coloring paper grocery bags
- Decorate your home and tree with holly, cedar, berries, fruits, and nuts and compost these items after the holidays are over.
- Decorate your table by making a centerpiece of colorful fruits, vegetables, and nuts and compost these items after the holidays are over.
- Ask your guests to bring their own reusable containers to take home holiday meal leftovers.
- Unwrap presents carefully and save gift boxes, bags, bows, and ribbon to use next year.
- Give gifts in reusable gift bags, metal containers, or baskets, or use colorful material, bandannas, or old clothes for wrapping.
- Keep the fronts of old Christmas cards to use as nametags, bookmarks, or postcards or donate them to St. Jude’s Children’s Hospital.



When you go shopping, bring your own reusable bags.



Make “do-it-yourself” decorations out of natural materials.



Avoid using disposable plates, utensils & napkins.

Waste Fact

During the holiday season, there’s typically a 25% increase in garbage.

CELEBRATE EARTH DAY!

Mecklenburg County Solid Waste participates annually in Earth Day events. If you would like us to distribute waste reduction information at your event, please contact solidwaste@mecknc.gov



PLEASE KEEP IN MIND THAT **NOT EVERYTHING** IS RECYCLABLE

Markets have dramatically changed, and are not tolerant of contamination. So do not bag recyclables, do not place complex items such as child safety seats made of plastic, and other such items in curbside bins.

Check out www.WipeOutWaste.com if you have questions.

WHEN IN DOUBT LEAVE IT OUT.



FOOD WASTE REDUCTION

Food loss and waste in the United States accounts for approximately 30 percent of the overall food supply available to retailers and consumers. So please assist and work to reduce food waste.

Food Waste generally comes in two basic categories:

- 1) Food that can be used by others (re-purposed);
- 2) Food that needs to be thrown away.

RE-PURPOSING: In Mecklenburg County, you have options for both of those food categories. For food that can be re-purposed, please consider donating usable food that you have to an organization that can get it to those in need. Please pre-plan this for any events that you might have, anticipate where usable left-over food can be taken. Usually, this has critical timing so that you can get the food to a donation location before it spoils or becomes un-usable. Attached are a few of the locations in the Mecklenburg area that have indicated they will accept usable foods. This list is not meant to endorse any particular group, but to assist you with a starting point to consider. We suggest using your search engine to learn more about these and other groups.



Re-purposed/Usable Food Donation Groups:

- Second Harvest Food Bank of Metrolina
- Urban Ministry Center

FOOD WASTE COMPOSTING: Composting Food Waste is an acceptable mechanism to process food materials that require disposal. There are limitations on the types of foods (primarily meats) that may or may not be acceptable.

At this time, Mecklenburg County is aware of only one private vendor that services the residential community for collection of food waste, this is Crown Town Compost. They offer their services for separate fees and they are not associated with municipal collection. Crown Town collects the food waste, and then will transport the materials to a facility located outside of Mecklenburg County for processing. If you desire their services, please use your search engine to explore their services. Mecklenburg County cannot endorse any particular vendor, however we provide information to the community on these types of specialized services when we are aware.

Yard Waste Composting – Special Note: Mecklenburg County operates yard waste composting facilities in the County, but these sites are NOT allowed or permitted to accept food wastes.



KEEP MECKLENBURG BEAUTIFUL

Keep
Mecklenburg
Beautiful

SwatALitterbug.com

Keep Mecklenburg Beautiful (KMB)

As an affiliate of Keep America Beautiful, Keep Mecklenburg Beautiful is a nonprofit volunteer-based entity operated under the guidance of a 20-member board of directors representing all sectors of the community. Its charter is to address litter prevention, beautification and community improvement as well as recycling and waste reduction throughout the County.

KMB concentrates its energies on programs and projects throughout Mecklenburg County, such as the annual Great American Cleanup (March 1st through May 31st)—the largest community cleanup event in the U.S.

If you'd like to conduct your own clean-up project, KMB will be happy to provide the tools—from bags, gloves, vests and litter sticks to educational material. For more information on KMB, visit www.wipeoutwaste.com.

Litter Prevention

Mecklenburg County strives to create a cleaner, safer environment for our community by focusing on litter cleanup, prevention, promotion and awareness, enforcement, and legislation efforts. A great contributor to the successes achieved so far is the partnerships developed between government agencies and the public/private sectors of our community, but in truth, each of us is individually empowered to make a difference.

Reporting Litter / Illegal Dumping

Reporting a litterbug is easy. Just dial 311 or report online through www.SwatALitterbug.com.

If the litter is thrown from a car, please make note of the vehicle's tag number, along with the date, time, location and brief description of the type of littering (cigarette butts, fast food wrappers, construction material, etc.). The owner of the vehicle will be sent a letter from the State of North Carolina Department of Transportation explaining that littering is illegal, a litter bag for the vehicle, and educational material on the harm caused by littering.

If you want to report excessive littering or an illegal dump site, you can call 311 or use the online reporting form.

Keep Charlotte Beautiful (KCB)

The 20 members of KCB are appointed by the Mayor and City Council. The Board's mission is to encourage Charlotteans to take greater responsibility for improving our community's environment. KCB has three focus areas: Beautification and Greening; Waste Reduction and Recycling; and Litter Prevention.

Visit kcb.charlottenc.gov for more information.

Noticed an illegal dump or a highly-littered area? Report it at 311

Recycle the Runway

Recycle The Runway is a unique fashion show event that offers students attending a Mecklenburg County public, private or charter high school an opportunity to design, create and model avant garde outfits made from recyclable materials. Students resurrect and refashion aluminum, paper, cardboard, plastics, and other materials that they normally would place in their recycling containers into incredibly creative and beautiful fashions that they display and model at the show. By participating in this event, students and administrators are reminded of the importance of recycling in homes and schools throughout our community. Area sponsors for more than six have donated over \$100,000 in prize money which were awarded to CharlotteMecklenburg Schools.



Adopt-A-Highway

Administered by the NCDOT Office of Beautification, this volunteer-based program results in a significant litter removal cost savings benefit for North Carolina taxpayers. In 2012, that savings was valued at \$5.3 million. All 100 counties have a local Adopt-A-Highway Coordinator that facilitates the adoption of two-mile sections of highway. The NCDOT county maintenance office provides trash bags, safety vests and gloves. In addition, an Adopt-a-Highway sign is placed at the two-mile section recognizing the volunteer(s) taking responsibility for litter removal on a quarterly basis.

Call 1.800.331.5864 or visit www.ncdot.gov/~beautification for more information.

Adopt-A-City Street

Adopt-A-City Street is administered by Keep Charlotte Beautiful. It allows businesses, individuals and organizations to make a significant impact on the cleanliness of Charlotte's streets by adopting a city roadside area and committing to cleaning it at least four times a year.

To sign up for this program, visit kcb@charmeck.org. Once accepted, two signs with your selected name will be installed on the city roadside that you have selected.

The Big Spring Clean (formerly Big Sweep)

Each year, over 500 volunteers remove an average of 10 tons of trash from our local waterways! Volunteers have fun, make a big difference, and learn the importance of taking care of our community resources.

For more information, please visit stormwater.charmeck.org.



North Carolina Spring and Fall Litter Sweep

Litter Sweep is a statewide roadside litter cleanup campaign sponsored by the NC DOT. The campaign is a result of a proclamation from the Governor encouraging citizens, businesses, local governments, civic groups and Adopt-A-Highway (AAH) volunteers to participate in making our state clean, green and beautiful. The events are generally scheduled for the last two weeks of April and September.

To volunteer, call **1.800.331.5864** or visit www.ncdot.gov/~beautification for information.

RECYCLE RIGHT



Plastic Bottles & Jugs
(with necks)



Paper & Magazines



Milk & Juice Cartons



Glass Bottles & Jars
(lids on - ok)



Empty Metal Cans



Cardboard & Small
Boxes
(clean pizza boxes - ok)



NO
Plastic Bags

WipeOutWaste.com



**WIPE
OUT WASTE**

WipeOutWaste.com